



Aeronautical Information System (AIS) Complete Aircraft Management System

Safety. Efficiency. Aircraft Flight Tracking . Customer Service. Crew Support. Aircraft Digital and Analog Monitoring. Global Engineering & Management - Essential tools for flight operations

SkyNet's AIS Global Satellite Aero tracking solution offers a unique flight management and engineering monitoring solution that is ideally suited for mission critical applications anywhere on the planet.

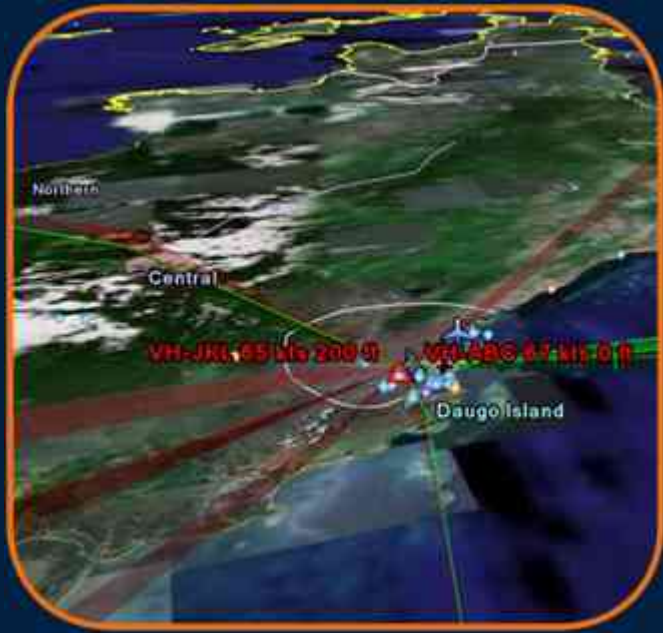
The screenshot displays the SkyNet AIS software interface. On the left, there is a table of flight schedules. On the right, a map shows the location of a specific aircraft, with a callout box providing details for flight VH-GHI.

Reg	Flight	From	To	Alt	Alt Time
Reg VH-GHI	CS	CS	POM	10	11-1310
Reg VH-GHI	CS	POM	CS	10	11-1310
Reg VH-GHI	CS	POM	CS	10	11-1310
Reg VH-GHI	CS	POM	CS	10	11-1310
Reg VH-GHI	CS	POM	CS	10	11-1310
Reg VH-GHI	CS	POM	CS	10	11-1310
Reg VH-GHI	CS	POM	CS	10	11-1310
Reg VH-GHI	CS	POM	CS	10	11-1310
Reg VH-GHI	CS	POM	CS	10	11-1310
Reg VH-GHI	CS	POM	CS	10	11-1310

VH-GHI
IN FLIGHT: CS -> POM
Heading: 10
Speed: 232.18Kts
Altitude: 24600ft
Last Update: 11-1310

BENEFITS

- Safety Monitoring**
 - Distress Functionality;
 - Emergency Services Tracking;
 - Voice - SMS - Data
- Aircraft Schedule Management;**
 - Asset Tracking & Routing;
 - Operational efficiency;
 - Data Logging;
 - Fleet views and Timeline
- Enhanced customer service**
- Ground Personnel Alerting**
- Full ETA / ATA and Flight Times**



Worldwide Global Web Access

Our straightforward web interface enables:

- Monitoring any equipped Satellite device;
- Request position update at any time;
- GeoFence areas of interest or auto high reporting;
- Full route construction and re-use.
- Global ICAO and IATA databases for route building
- Messaging direct from Web to Aircraft
- Global Duress Alert escalation and response service
- Routine arrival alerts by SMS and e-mail

SkyNet will also design and build custom solutions. These custom solutions can be hosted in our Secure Data Centre. Google Integrated, as a pioneer in KML data delivery

SkyNet can offer fully integrated services for Google Earth display or other customer applications.

Global Flight Data – Aircraft Fleets

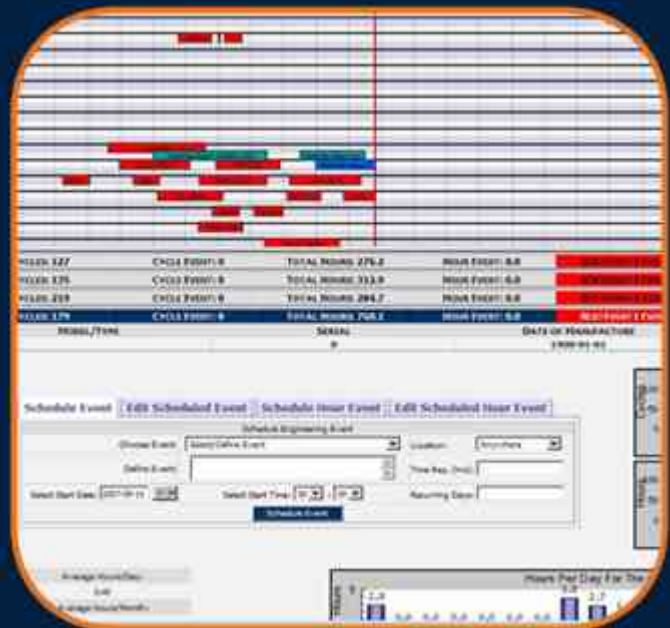
- Route Building and Display
 - ✓ Altitude, position, ID and heading data
 - ✓ Real time data . including mixed fleet satellite network, Inmarsat and Iridium
- Selectable Charting & Route Estimates
 - ✓ Destination Estimates with forward alerting for staff and customers, SMS / e-mail
 - ✓ Flight Deviation Monitoring
- Two way Text Messaging - SMS (short messaging service)
- Duress Alarms and Escalation Response
- Global Coverage
- All of these features combine to provide SkyNet's unique Aero Tracking & Management Solution.

Real time flight data keeping everyone informed and up to date, iron out the delays, schedule changes and providing real efficiencies.

Sensitive freight monitoring and long range estimates are essential, for accurate logistics monitoring, SkyNet AIS.

Satellite flight monitoring breaks free of traditional data sources and does not rely on National and International Air Service Authorities data.

Safety in the sky has never been more important. With silent fixed or personal satellite duress alarms available globally, aircraft can be tracked and aircrew distress reduced in hostile situations.



SkyNet

Mobile Communications
ABN 29 101 529 702



P +61 7 38605511
F +61 7 30090401
E sales@skynetmobile.com
PO Box 63
Hamilton QLD 4007 Australia
www.skynetmobile.com

SkyNet Aero
SkyNet Marine
SkyNet Fleet